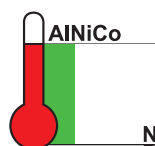
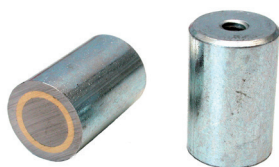
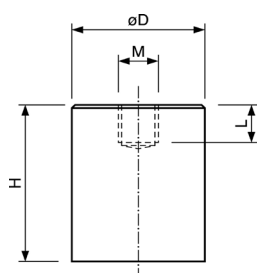




**Stabgreifer, AlNiCo, Stahlgehäuse, verzinkt, Innengewinde**  
**Bar magnet, AlNiCo, steel body, zinc coated, internal thread**

■ ■ ■ Hergestellt in Deutschland / manufactured in Germany



Art.-Nr.	D (mm)	H (mm)	Gewinde (MxL) Thread (MxL)	Haftkraft (N) Power (N)	Gewicht (g) Weight (g)	Temperatur (°C) Temperature (°C)
SA006cB	6 ±0,1	20 ±0,2	M3x5	2	4	450
SA008cB	8 ±0,1	20 ±0,2	M3x5	3	7,5	450
SA010cB	10 ±0,1	20 ±0,2	M4x7	8,5	11	450
SA013cB	13 ±0,1	20 ±0,2	M4x7	12	19	450
SA016cB	16 ±0,1	20 ±0,2	M4x5	20	30	450
SA020cB	20 ±0,1	25 ±0,2	M6x7	40	55	450
SA025cB	25 ±0,1	35 ±0,2	M6x9	60	121	450
SA032cB	32 ±0,1	40 ±0,2	M8x9	160	220	450
SA040cB	40 ±0,2	50 ±0,2	M8x12	240	436	450
SA050cB	50 ±0,1	60 ±0,2	M10x12	400	794	450
SA063cB	63 ±0,1	65 ±0,2	M12x14	660	1.274	450