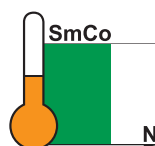
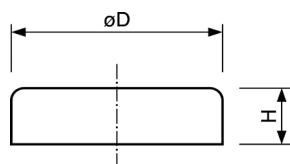




Flachgreifer, SmCo, Stahlgehäuse

Flat pot magnet, SmCo, steel body

■ ■ ■ Hergestellt in Deutschland / manufactured in Germany



Art.-Nr.	D (mm)	H (mm)	Haftkraft (N) Power (N)	Gewicht (g) Weight (g)	Temperatur (°C) Temperature (°C)
FS006aA	6 ±0,1	4,5 ±0,1	5	1	200
FS008aA	8 ±0,1	4,5 ±0,1	11	2	200
FS010aA	10 ±0,1	4,5 ±0,1	20	3	200
FS013aA	13 ±0,1	4,5 ±0,1	40	4	200
FS016aA	16 ±0,1	4,5 ±0,1	60	7	200
FS020aA	20 ±0,1	6 ±0,1	90	14	200
FS025aA	25 ±0,1	7 ±0,2	150	26	200
FS032aA	32 ±0,1	7 ±0,2	220	42	200