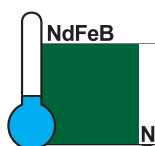
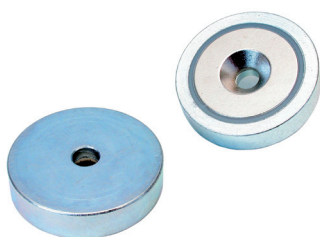
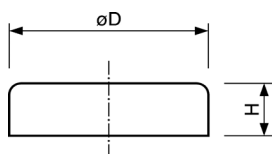




Flachgreifer, NdFeB, Stahlgehäuse, Bohrung und Senkung
Flat pot magnet, NdFeB, steel body, bore and counter bore

■ ■ ■ Hergestellt in Deutschland / manufactured in Germany



Art.-Nr.	D (mm)	H (mm)	d1 (mm)	d2 (mm)	Haftkraft (N) Power (N)	Gewicht (g) Weight (g)	Temp. (°C) Temp. (°C)
FN010aH	10 ±0,1	4,5 ±0,1	2,6 ±0,1	5,2 +1/-0	19	2	80
FN013aH	13 ±0,1	4,5 ±0,1	3,5 ±0,1	6,6 +1/-0	40	4	80
FN016aH	16 ±0,1	4,5 ±0,1	3,5 ±0,1	6,6 +1/-0	75	6	80
FN020aH	20 ±0,1	6 ±0,1	4,5 ±0,1	9,3 +1/-0	105	13	80
FN025aH	25 ±0,1	7 ±0,2	4,5 ±0,1	9 +1/-0	160	24	80
FN032aH	32 ±0,1	7 ±0,2	5,5 ±0,1	11 +1/-0	310	39	80
FN040aH	40 ±0,1	8 ±0,2	5,5 ±0,1	10,3 +1/-0	500	73	80