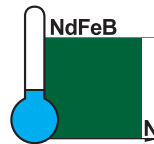
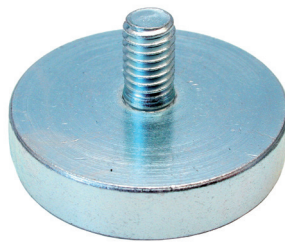
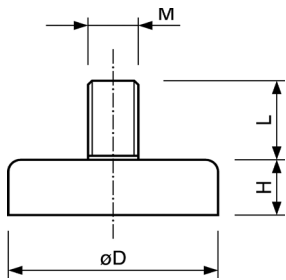




**Flachgreifer, NdFeB, Stahlgehäuse, Gewindezapfen**

**Flat pot magnet, NdFeB, steel body, threaded neck**

■ ■ ■ Hergestellt in Deutschland / manufactured in Germany



Art.-Nr.	D (mm)	H (mm)	Gewinde (MxL) Thread (MxL)	Haftkraft (N) Power (N)	Gewicht (g) Weight (g)	Temperatur (°C) Temperature (°C)
FN006aE	6 ±0,1	4,5 ±0,1	M3x7	5	1,3	80
FN008aE	8 ±0,1	4,5 ±0,1	M4x8	12	2,3	80
FN010aE0	10 ±0,1	4,5 ±0,1	M3x7	25	2,5	80
FN010aE1	10 ±0,1	4,5 ±0,1	M4x8	25	3	80
FN013aE	13 ±0,1	4,5 ±0,1	M5x8	60	5	80
FN016aE	16 ±0,1	4,5 ±0,1	M6x8	95	8	80
FN016aE1	16 ±0,1	4,5 +0,2/-0,1	M4x8	85	7	80
FN020aE	20 ±0,1	6 ±0,1	M6x10	140	15	80
FN025aE	25 ±0,1	7 ±0,2	M6x10	200	27	80
FN032aE	32 ±0,1	7 ±0,2	M6x10	350	42	80
FN040aE	40 ±0,1	8 ±0,2	M8x12	670	80	80
FN047aE	47 +0,2/-0,1	9,2 +0,2/-0,3	M8x13	790	107	80